

DCC Extra

Bit of This & That

Day Care Connection CACFP Check Insert

4/16



DCC staff reminds you it's that time again-- time when we must mail our annual audit to all parents whose kids participate in CACFP. Encourage them to complete this simple form & return to DCC. They're reviewed by "the powers that be". These can include: state CACFP officials, USDA decision-makers & more important, the US Congress. It's simple; the more quality responses, the better food program looks to govt funders. They need to see how very important these dollars are to kids in day care homes across the USA. Please, please urge parents to mail these back to DCC! Thanks on behalf of today's children... tomorrow's adults.



Don't forget your annual CACFP-required 2 hrs nutrition trng. Please attend 1 of our fun upcoming workshops. Don't be caught without enough credit to keep food program \$\$\$!

DCC office hrs

Office Hrs: M-F, 8:30-4:30
Make/Take Supplies, Resource Cntr: 1st Tues, monthly- 8PM,
Video Trngs: 1st Tues, monthly

DCC



video trngs

- **APR**
- 5 "Storytelling Made E-Z"
- **MAY**
- 3 "Tips from Tina"

(All begin @ 6:30PM. These group video trainings **DO** count for health dept credit.)

"SPECIAL NEEDS SATURDAY"



**SAT, APR 30th,
 9AM - 2:30PM**

@ OP CHURCH OF CHRIST
 (119/Pflumm, 13400 W 119th, 66213)

Your personal invitation will be arriving soon for our annual spring, 5-hr trng! Folks, this fun learning event is full of what you need... useful & interesting info just right for family day care home businesses.

Important topics include:

Special Needs Care-Provider Observations & Parent Interactions

Amy Wilcox, M.S., ECSE, BCBA
 Infant-Toddler Services of JoCo

Feeding Children with Special Needs

Megan Wilkins, OTR
 Infant Toddler Services of JoCo

Blending Special Needs into Your Group

Cheryl Wilmington,
 former child care provider

All this, plus, sharing & support from your fellow providers! Speakers bring warmth, understanding of your profession, as well as extensive education & experience. Enjoy fun & terrific taco bar lunch. Come & catch the spirit! Space IS limited.
 (5 hrs licensing/2 hrs required-CACFP credits)



• **Fire Extinguisher Checks:**
8:15-9:30AM
 -same day, same place

"CPR/1ST AID"

• **SAT, APR 16th,
 8:30AM @DCC**

(RSVP by 4/6) OR

• **SAT, MAY 21st,**

8:30AM @DCC (RSVP by 5/11.)



Tiffany Saturday, EMT, is excellent in understanding just what providers have to be responsible for these days! CPR/ Pediatric 1st Aid (6 hr) combined class is \$70. (Fee is non-refundable, as materials/ teacher must be planned.) Please bring lunch. Send ck to: "DCC", 8855 Long, Lenexa, 66215. Write preferred date on "memo" line.

Infant Meal Offer Forms

If you get an Infant Meal Offer Form with your check, please return it right away. DCC is required to deduct the next month for that infant if no form is received here. If you feel you got 1 by mistake; please call Marcie, 529-1200 ASAP. Thanks.



calendar reminders



We don't "babysit"!

- 4/5 Resource Cntr/Video Trng **MENUS DUE**
- 4/16 CPR/1st Aid
- 4/20-22 staff conference - *DCC Closed*
- 4/30 **"SPECIAL NEEDS SATURDAY"** 5 hr trng!! (Fire Extinguisher Cks, too!)
- 5/3 Resource Cntr/Video Trng (Call DCC @529-1200, for info or to RSVP.)

visitors' views



• Kelly, Nancy & Kathy have noticed some of you having problems loosing kids to surrounding day care centers. Think about checking out the past DCC workshop titled: "Competing with Day Care Centers". It still offers great ideas for ways to sell yourself & your business for parents to see the real quality differences between individualized attention found in family day care homes vs. the large & sometimes, impersonal, settings of center facilities.

Hmmm... something to think about

We can't THANK you enough--

thank
you!

--for calling or e-mailing when you will be closed or won't be home. DCC is required to have caregivers follow this USDA requirement so Home Visitors won't come unaware.

--for turning in your **Enrollment Form the 1st day a new child starts**. It's almost impossible for DCC to data enter all of these at month end.

--for having your parents fill out **Infant Meal Offer Form for child's entire 1st yr.** Then, DCC doesn't have to bug you later.

--for putting names in **Alphabetical order by 1st names on your Daily Attendance Roster**. This helps DCC a great deal when verifying matching Enrollments.

--for turning menus in **by deadline**. The process goes much smoother for ALL as DCC has state deadlines we must make in order to get your money.

--for turning in **new license as soon as you get it**. DCC is required to keep up-to-date copy.

celebrating CACFP

One of the most important life-long lessons a child learns is healthy eating habits. Receiving nutritious meals early in life, as well as being physically active, is critical to the establishment of positive lifelong habits.



By participating in food program, you recognize the importance of participation & are helping children to grow & develop to their fullest potential. Thank you for creating an atmosphere, which instills a positive, curious attitude about food from the earliest years!



waste less,
save more

Don't throw away food.
Use it to create
a new meal or snack.

Bread - Make French toast, croutons or bread pudding.
Serve toast sprinkled with garlic powder at dinner.

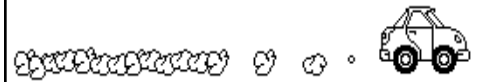
Bananas - Top cereal with sliced bananas.
Freeze & use for smoothies.
Make banana bread or muffins.

Vegetables - Add veggies to soup, stew or casserole.
Make a salad.

Eggs - Make deviled eggs, egg salad sandwiches.
Make an omelet or fried egg sandwich.

Beans - Add cooked beans to soups, chili or stew.
Mash cooked beans to make a dip.

helps a coming



PROVIDER SHARING CORNER



important to get
sw others in
mutual support.

• WELCOME!

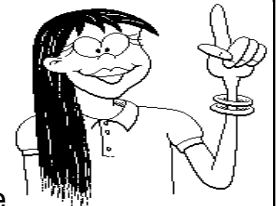
The following providers recently joined our DCC family from these schools.

Beth Gakungi- Rosehill

• DID YOU KNOW?

You can request your own school's provider list. Call us @529-1200, & we'll gladly mail. Just remember; it's supplied for your personal networking use ONLY, & legally shouldn't be used for referrals.

referrals & you



Spring is a time of renewal... a time to spruce up both home & day care business practices. DCC's Referral Dept asks you to consider parent agreements or contracts. Do you have a written contract with all your families? When is the last time you reviewed it? Remember, written agreements help both providers & parents have clear guidelines throughout a caretaking relationship. It's the blueprint for future decisions. So, take time now to renew all policies. "Spruce up" or clarify your home business this spring! (To get a super sample form, call 529-1200 or e-mail marcie@daycareconnection.org).



DCC is committed to making workshop activities accessible to all participants. Please contact: 8855 Long, Lenexa, KS, 66215, (913) 529-1200, for special requirements or assistance needed. In order to accommodate you, we must receive your request 1 week prior to event. After this date, we'll make every effort to provide assistance, but can't guarantee requested equipment or services will be available.

This institution is
an equal opportunity provider.